

**JBL**

**PROFESSIONAL**

# VTX SERIES

SYSTEM SOLUTIONS

**A8   B18   S28   G28**



# VTX SERIES | A8

Compact Dual 8" Line Array Element



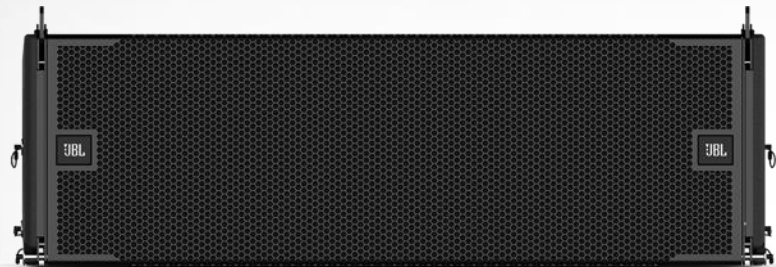
- 3-Way Design (LF / MF / HF)
- LF: 2x 8" | MF: 4x 3.5" | HF: 2x 2"
- 2-Channel Driver (Passive for MF/HF)
- 110-deg Horizontal Coverage
- IP55 Rated
- 762mm (30") x 210mm (8.3") x 305mm (12")
- 29.5kg (65lbs)



# EXPANDING THE A-SERIES FAMILY



- Same ID Design
- Same Rigging System
- Same Acoustic Design (LF and MF Waveguides)
- Same LF Ports
- Similar Accessories



**VTX: A8**



**VTX: A12**

To scale comparison

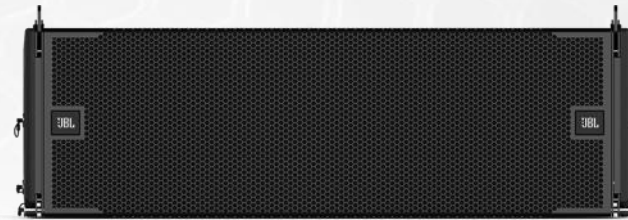


# LINE ARRAY

## SIZE OPTIONS



**VTX: V25-II**



**VTX: A12**



**VTX: V20**



**VTX: A8**

# INNOVATION AT THE TRANSDUCER LEVEL



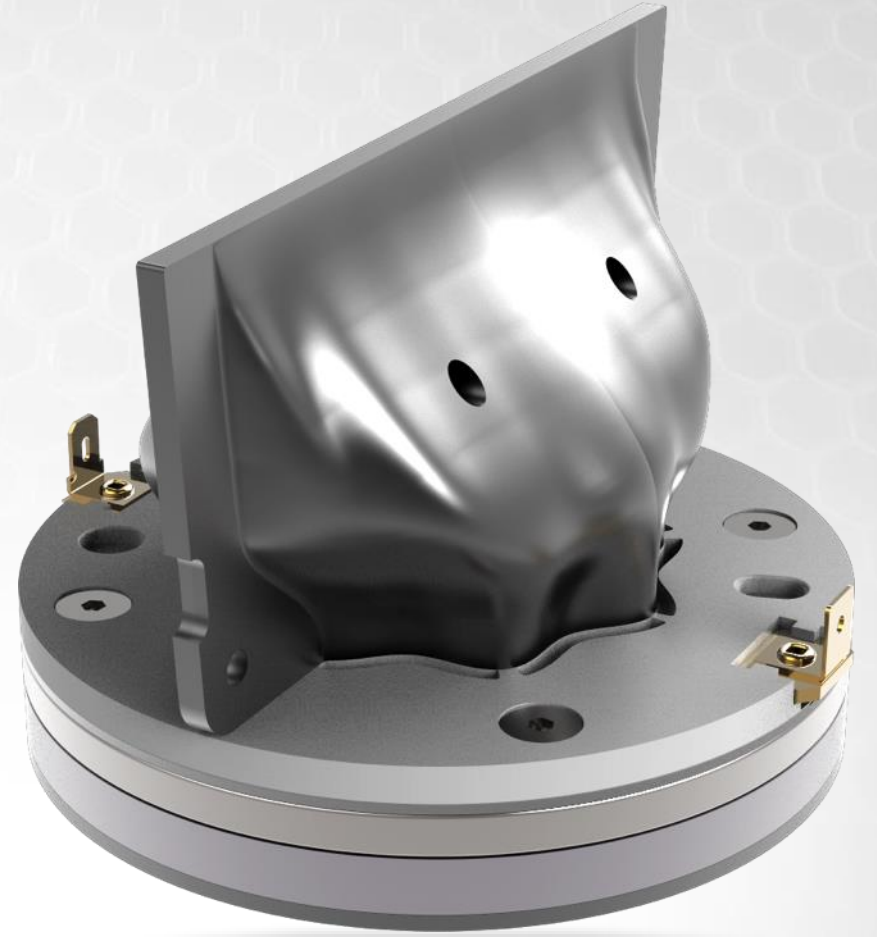
- All Custom Made JBL Transducers
- All New NEO MID and LF Woofers
- Same HF Driver as VTX A12



# INNOVATION AT THE TRANSDUCER LEVEL



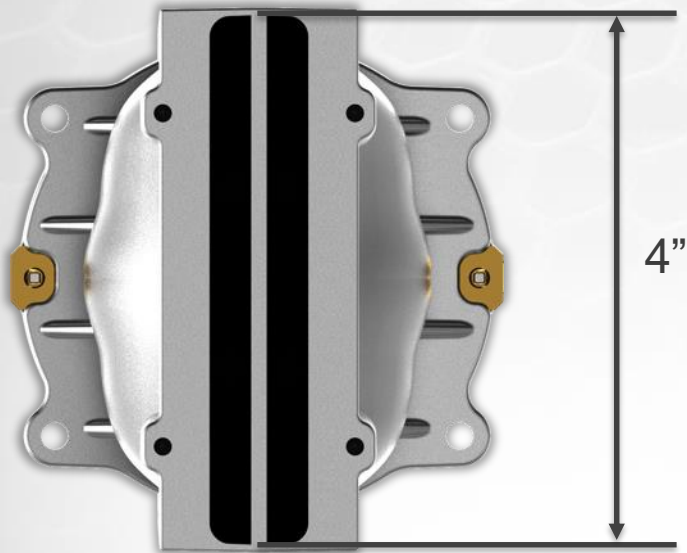
- JBL 2423K HF Drivers, Same Driver as VTX A12 and VTX A12W
- Innovative Waveguide + Compression Driver Design
- 2" Ring-Radiating Diaphragm
- Unique Exit and Phase-Plug Design



# COMMON HIGH-FREQUENCY DRIVER



**VTX: A12**



12"

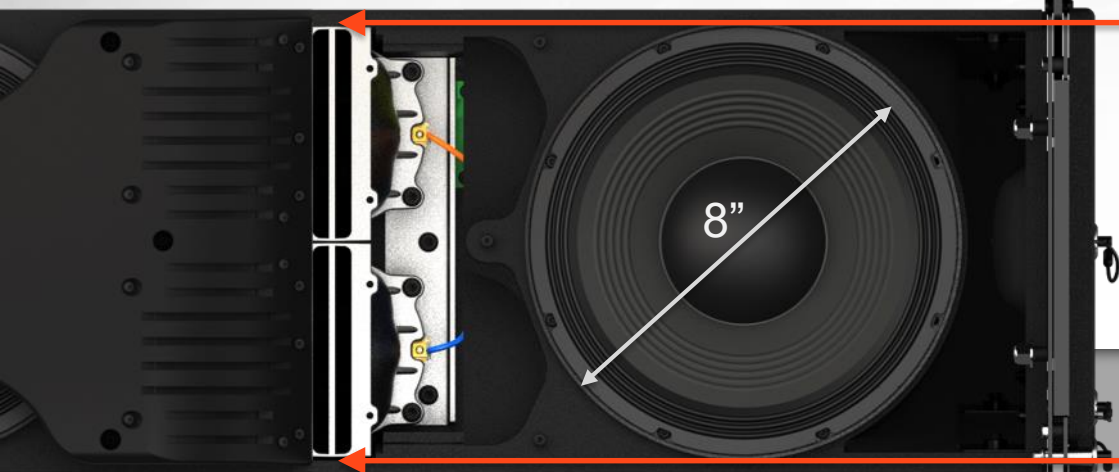




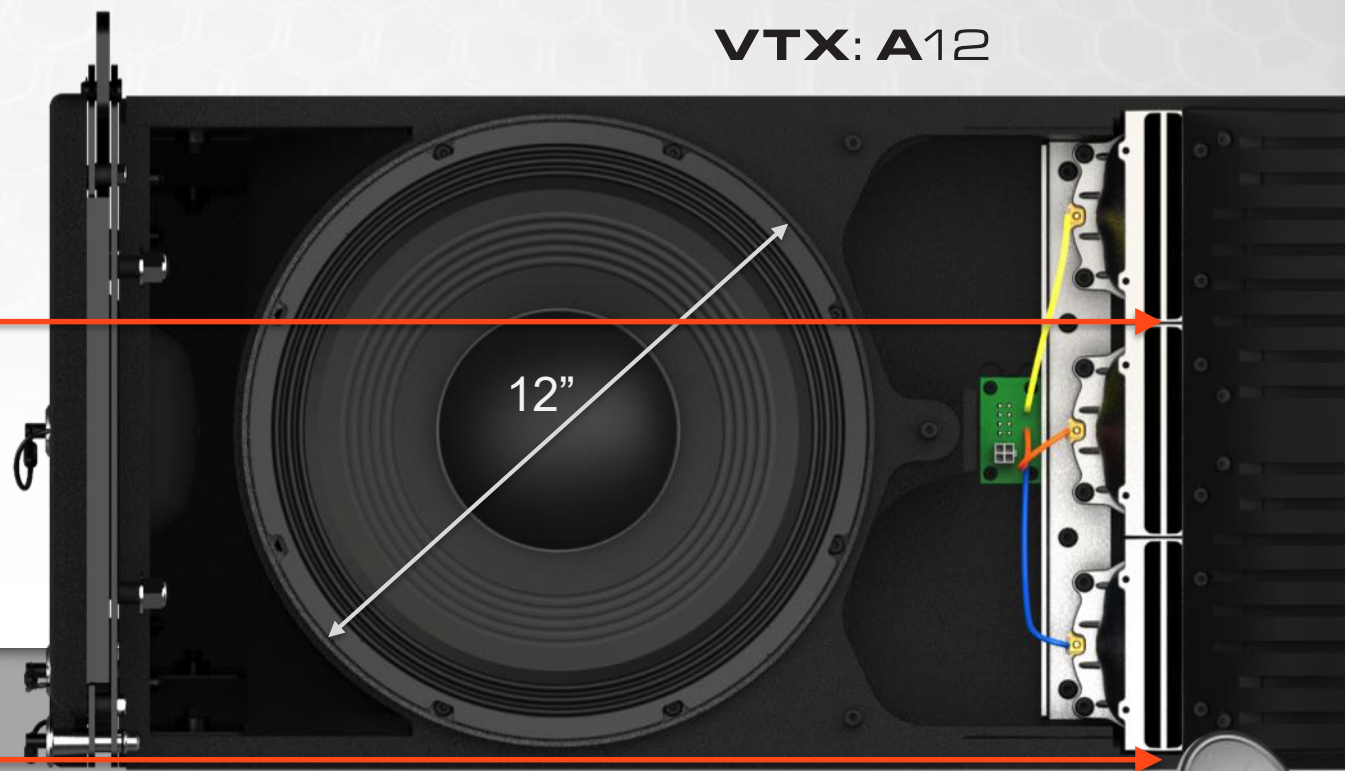
# COMMON HIGH-FREQUENCY DRIVER



**VTX: A8**



**VTX: A12**





# LF WOOFER

## NEW 8" DIFFERENTIAL DRIVE



- 8" NEO Woofer (2x)
- Differential Drive Design with Outer NEO Magnet
- Dual 2" Voice-Coil, Dual-Gap Design
- High-Sensitivity
- New Cooling Ports and Fins (2 x New Patent applications)
- Double the Power Handling of Competitors



# MF WOOFER

## NEW 3" DIFFERENTIAL DRIVE



- 3" NEO Woofer (4X)
- Single 1.5" Voice-Coil Design
- High-sensitivity, low distortion
- Aluminum Shorting ring + copper cup design



# INNOVATIVE SUSPENSION SYSTEM



- **Same Rigging System as A12**
- Auto-locking Mechanism
- High-Resolution Angle Selection
- Easy to Understand and Use
- Quick, Safe, Easy





# INNOVATIVE SUSPENSION SYSTEM



- **Same deployment steps as A12**
- First select the desired angle
- Suspend the system
- Angles are automatically set!



# 2-CHANNEL INCLUDED PASSIVE NETWORK



- Neutrik NL4 Connectors
- 2-Channel Driven
- Passive Network Between MF and HF
- 8-ohm Load per Bandpass



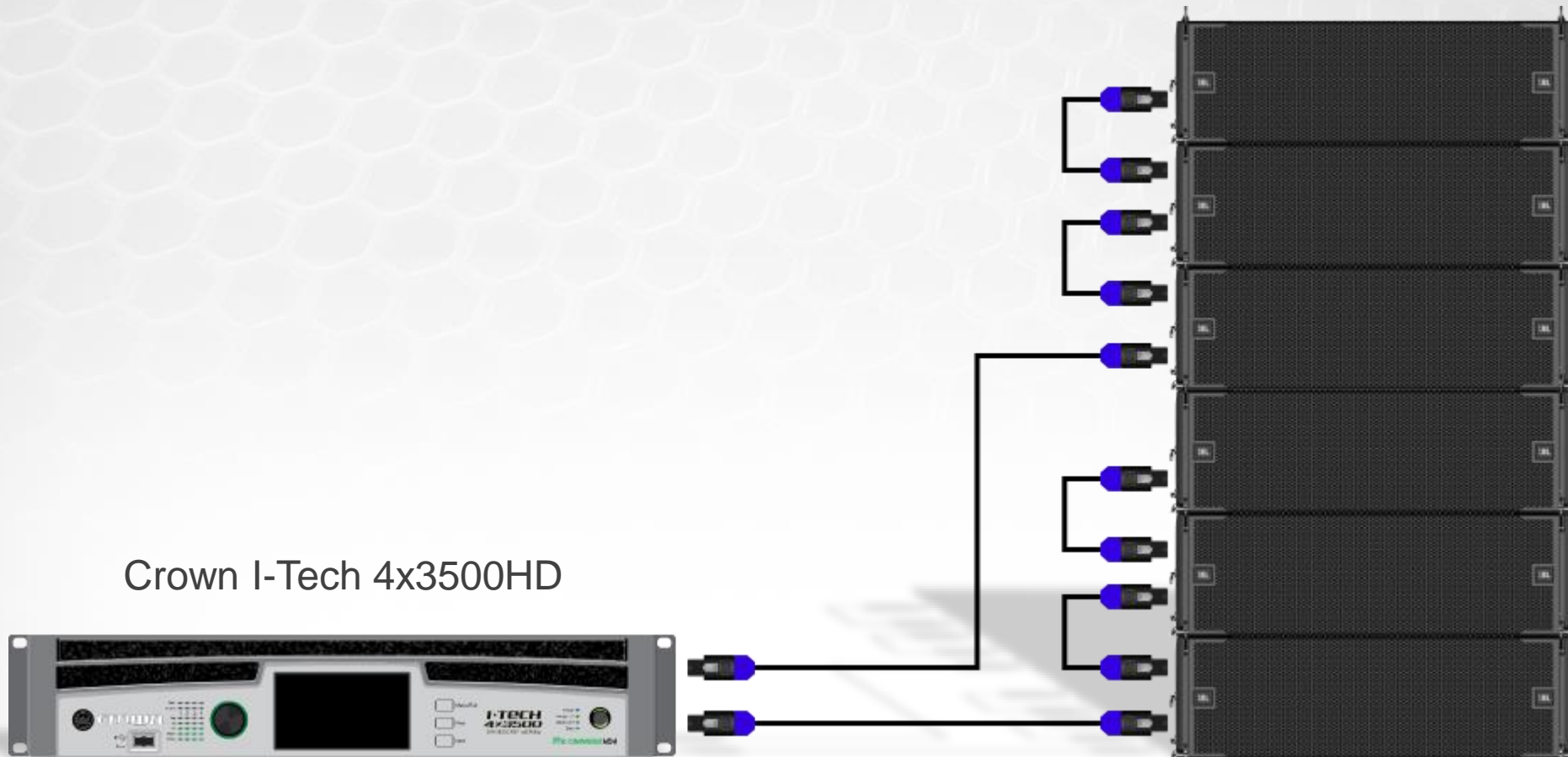
# AMPLIFICATION

## UP TO 6x VTX A8 PER AMP



**VTX: A8**

Crown I-Tech 4x3500HD





# VTX SERIES | B18

Compact Single 18" Subwoofer



- Single 18" Subwoofer
- **New 18" Transducer (JBL 2288H)**
- New Sliptream™ Double-Flared Ports
- +4dB Sensitivity over other VTX Subs (80Hz)
- Same Industrial Design as A8/A12
- VTX A8 Can be Suspended under B18
- Compatible with all VTX A8 Suspension Accessories
- Acoustically Compatible with ALL VTX Products



**A**=ARRAY    **B**=BASS

# INNOVATIVE SUSPENSION SYSTEM



- New spring-loaded rigging mechanism
- Remove QRP to deploy the connecting bars
- Spring applies tension to prevent rattling
- M20 pole attachment
- IP55 Rating (Pending Testing)
- Up to 16 x VTX B18



# FLEXIBLE CONFIGURATIONS

- Support for Cardioid Configurations
- Suspended or Ground stacked
- 2 x NL4 Connectors at the Front and 2 at the Back
- Pin1 / Pin2 Selection Switch
- Compatible with All VTX A8 Suspension Accessories





# FLEXIBLE CONFIGURATIONS



- Support for Cardioid Configurations
- Suspended or Ground Stacked
- 2 x NL4 Connectors at the Front and 2 at the Back
- Pin1 / Pin2 Selection Switch
- Compatibility with All VTX A8 Accessories





# ACCESSORIES

# ACCESSORIES

## 12X NEW MODELS



- VTX A8 AF | Array Frame
- VTX A8 AF EB | Extension Bar
- VTX A8 MF | Mini Frame
- VTX TRC | Truss Clamp
- VTX A8 SB | Suspension Bar
- VTX A8 VT | Vertical Transport
- VTX A8 VT CVR | Transport Cover
- VTX A8 VT GND | Ground Stack
- VTX A8 BASE | Base Plate
- VTX B18 ACC | Front Dolly & Cover
- VTX B18 VT | Vertical Transport
- VTX B18 VT CVR | Transport Cover





# ACCESSORIES

## VTX A8 AF | ARRAY FRAME



- Main Frame + Extension Bar Design
- High-Resolution Single Point Suspension
- Reversible Extension Bar for Up-Tilt Applications
- 1 x Extension Bar & 3 Shackles Included



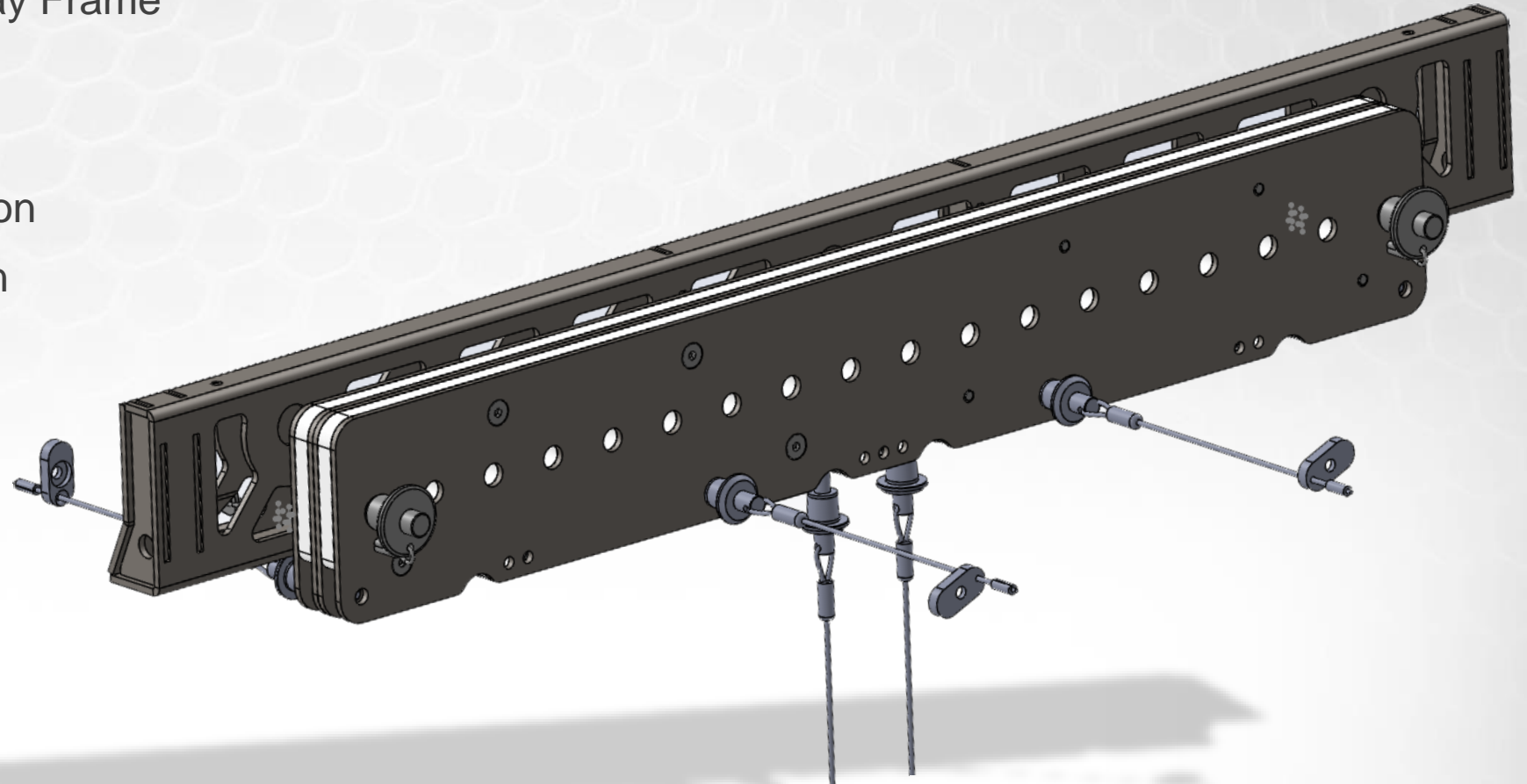
Array Geometry Dependent

# ACCESSORIES

## VTX A8 MF | MINI FRAME



- Simple Inexpensive Array Frame
- 8 – 10 VTX A8
- 3 – 4 VTX B18
- Light-Weight Construction
- 3x Part Compact Design



# ACCESSORIES

## VTX RC500 | Rotating Clamp



### Rotating Clamp 500kg:

- Universal Truss Clamp Adapter
- Support for Up to 500kg (1100lbs)
- 360-deg Rotation
- 1/2" Shackle Attachment Support
- 10-deg Rotation Marks

### Compatible with:

- VTX A8 MF
- VRX
- Vertec VT4886

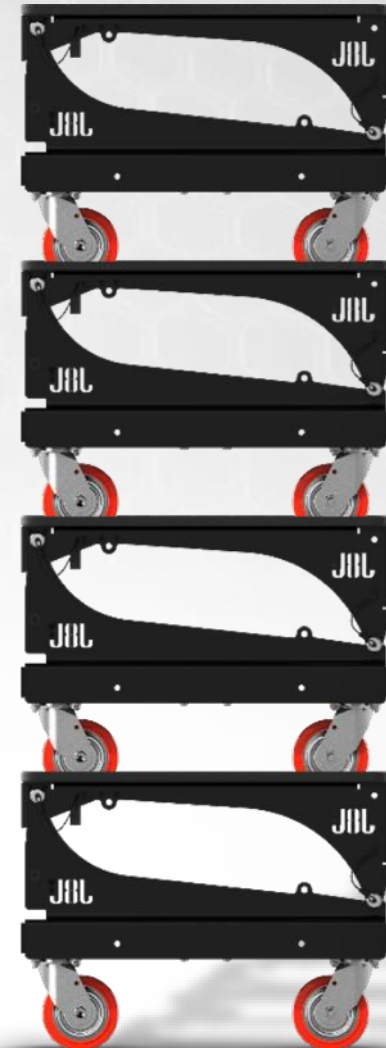




# ACCESSORIES

## VTX A8 VT | TRANSPORT CART

- Stackable Design for Storage
- Optional Soft Cover Available
- Aluminum Construction



# ACCESSORIES

## VTX A8 BP | BASE PLATE



- Used for Ground Stacking VTX A8
- Connects to Any Subwoofer with an M20 Attachment
- Supports Up to 8 x VTX A8
- Range: -15-deg to +5-deg
- Light-Weight Compact Design



# ACCESSORIES

## VTX B18 OPTIONS



- VTX B18 ACC | Front Dolly & Cover
- VTX B18 VT | Vertical Transporter
- VTX B18 VT CVR | Cover

